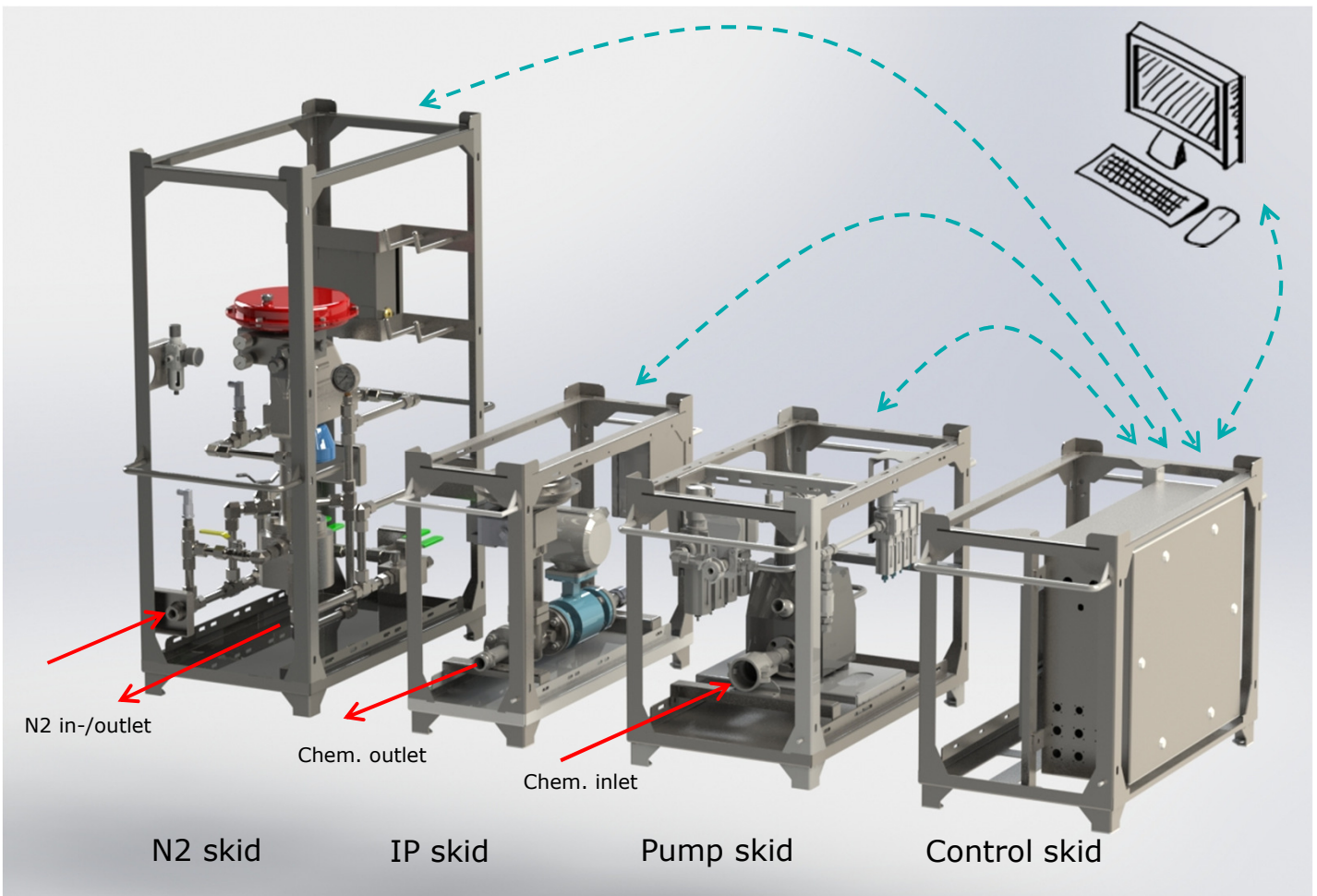


Complete solution for foam cementing additive

Set up,
control,
monitoring and
process data transfer
on/to any device using
pure Web technology



PLUG AND PLAY:

- Local operation from touch screen
- Remote control via pluggable fiber cable output
- Web control by connecting network

The solution consist of one N2 metering skid and up to four chemical metering (IP) skids and pumps. All controlled by one control system. The chemical metering skids and pumps can also be used in other contexts where dosage is required.

Realtime process data securly to anyone anywhere.

TECHNOLOGIES

- o PLC software: TwinCat
- o HMI software: Atvise
- o Communication: OPC UA
- o Web technology: HTML5

INSTRUMENTATION:

- o Regulation valve: Samson
- o Flowmeter: Rosemount
- o PLC: Beckhoff
- o IO modues: Beckhoff
- o Touch monitor: Siemens / Beckhoff

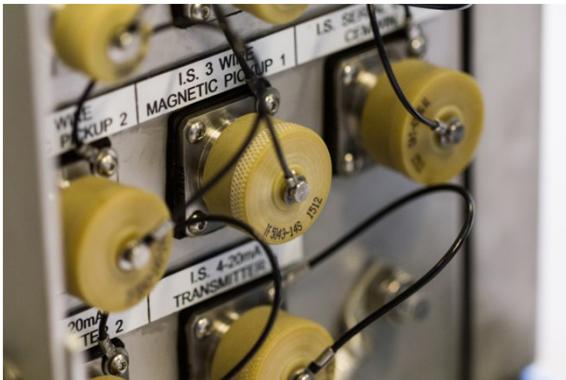
STANDARDIZED AND OPEN TECHNOLOGIES

We use standardized and open technologies (unlike proprietary) for control, structuring and presenting of communication

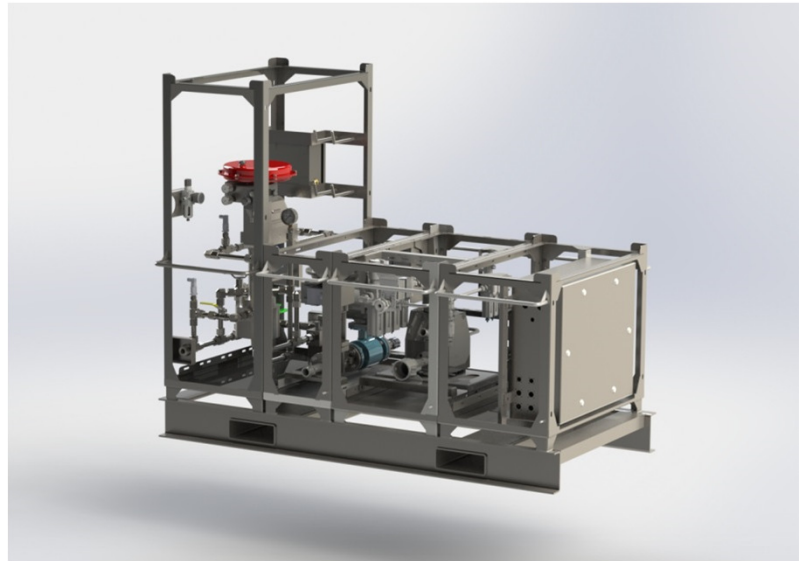
OPC UA is the data exchange standard for safe, reliable, manufacturer- and platform-independent industrial communication. It enables data exchange between products from different manufacturers and across systems.

Open technology means freedom to choose the most cost effective solutions without having to take into account the specific requirements from particular suppliers or brands.

atvise® is a 100% pure web based HMI / SCADA solution. The only requirement for viewing the HMI is a device with an HTML5 compatible browser! No requirements for support of "plug-ins" like ActiveX, Java, Silverlight, Flash etc.



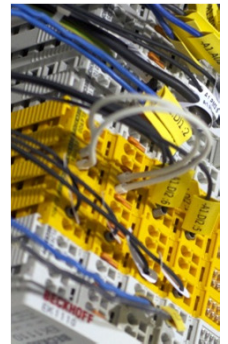
Plug connections for quick and easy startup.



Stacked on a pallet with dimensions 1700 x 1400 x 1000 mm.

WEB ACCESS FACILITATES:

- o Remote Monitoring & Control
- o Remote Job Set Up
- o Remote Diagnostics
- o Remote System Updates
- o Remote Access to Real Time Data



TECHNICAL DATA:

- o For use in hazardous Ex zone 2
- o Built in according to Norsok Z-015
- o Weight measuring frame: 75 kg
- o N2 Skid with 15k psi components
- o Main power: 230 VAC 1 phase
- o Pump: Air driven
- o Safety: Emergency stop